

Worldline Edge (Halo)

Terminal Guide

Table of Contents

1.	INTRODUCTION	3
1.1	Prerequisites	3
2.	LINKLY ONPREM	3
2.1	Software installation - Setup.exe	3
2.2	Software installation - Configuration Wizard	8
2.3	OnPrem Terminal Setup	12
2.4	OnPrem Connection test	12
3.	LINKLY CLOUD	14
3.1	Cloud POS Setup	14
3.2	Cloud Terminal Setup	15
3.3	Cloud Connection test	15
4.	TEST POS SOFTWARE	15
4.1	IPTestPOS	15

1. Introduction

This document provides a step-by-step guide to connecting your POS software to an Orbit terminal using either Linkly OnPrem or Linkly Cloud.

1.1 Prerequisites

Before beginning the setup process, determine whether your POS software will connect using Linkly OnPrem or Linkly Cloud, as each integration type involves different installation and configuration steps. The terminal's communication method must also be configured accordingly.

For guidance on the appropriate integration type, please contact your POS provider.

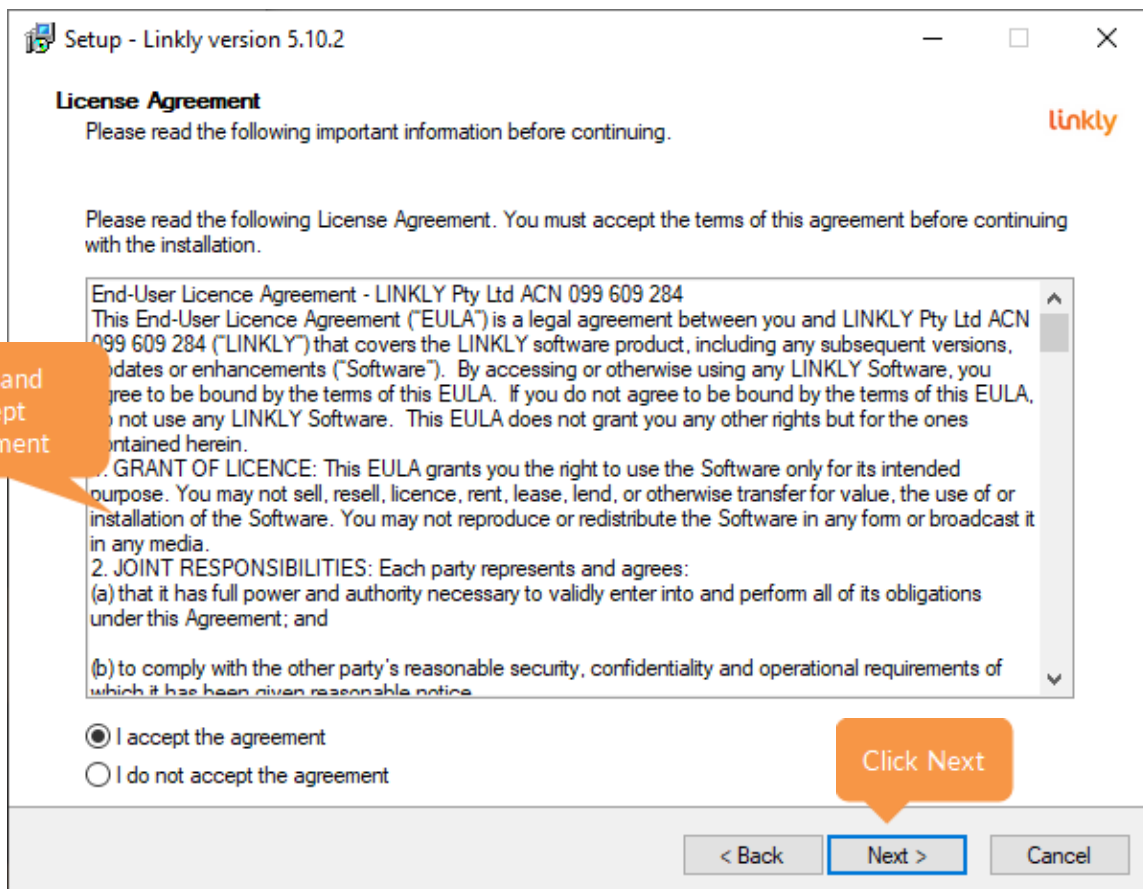
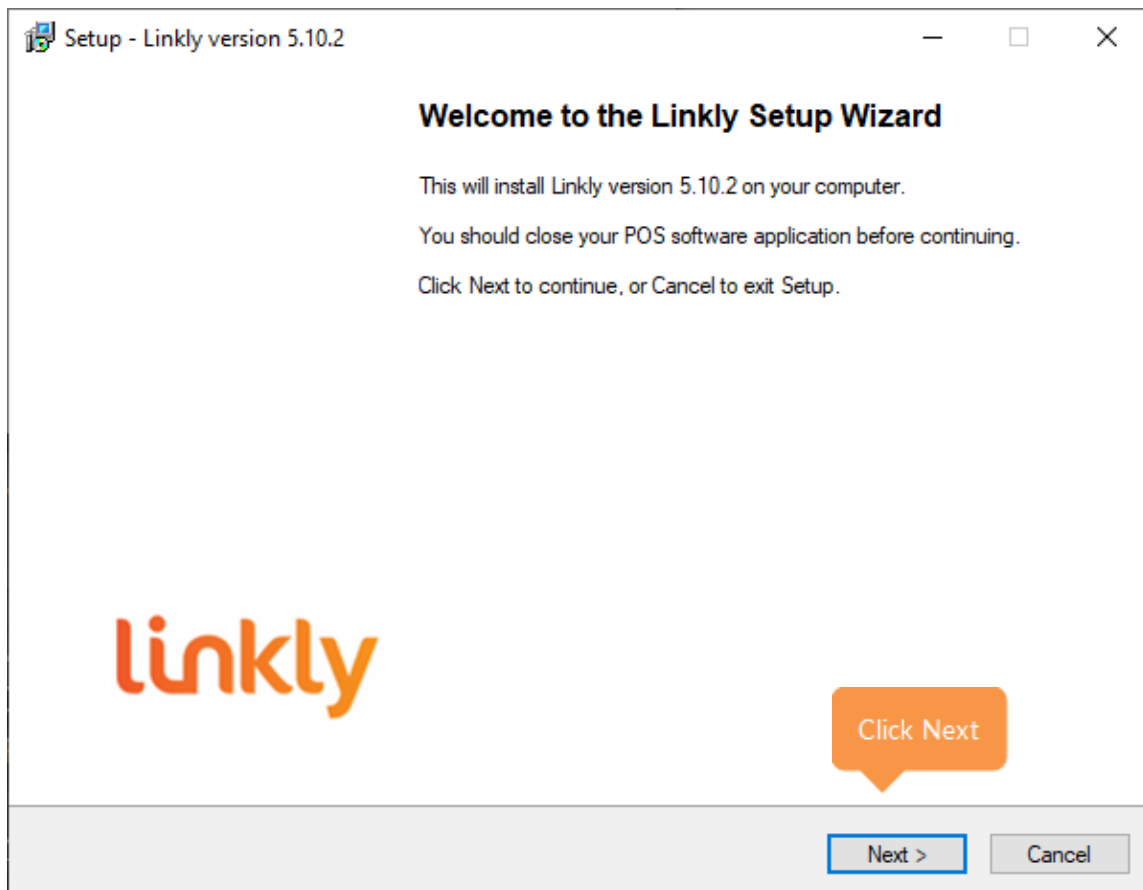
Once the integration type is confirmed, proceed to the corresponding section of this document.

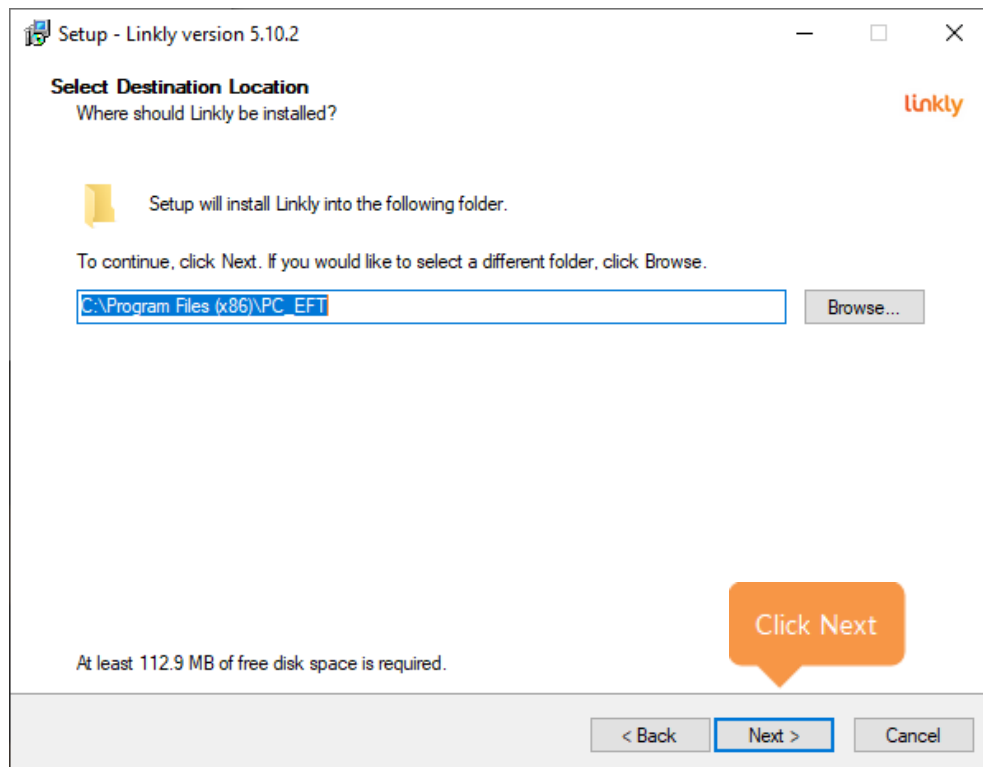
2. Linkly OnPrem

2.1 Software installation - Setup.exe

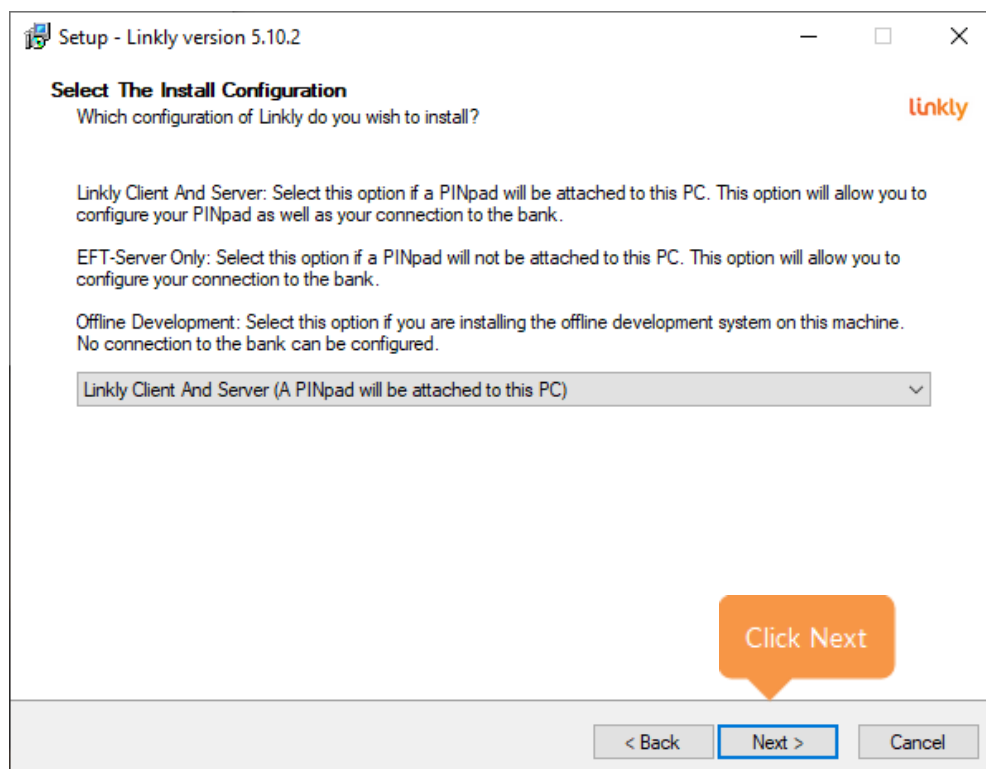
Visit the Linkly website and download the Linkly setup.exe -Software Downloads - Linkly

Follow through the prompts on the installer to complete the installation.

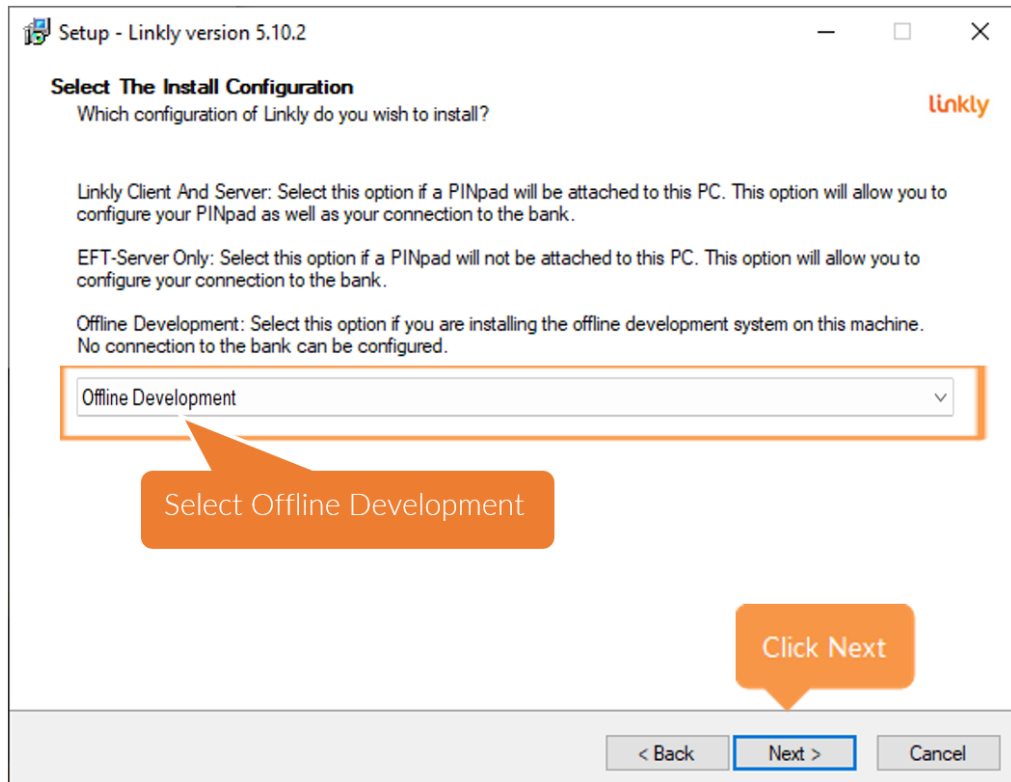


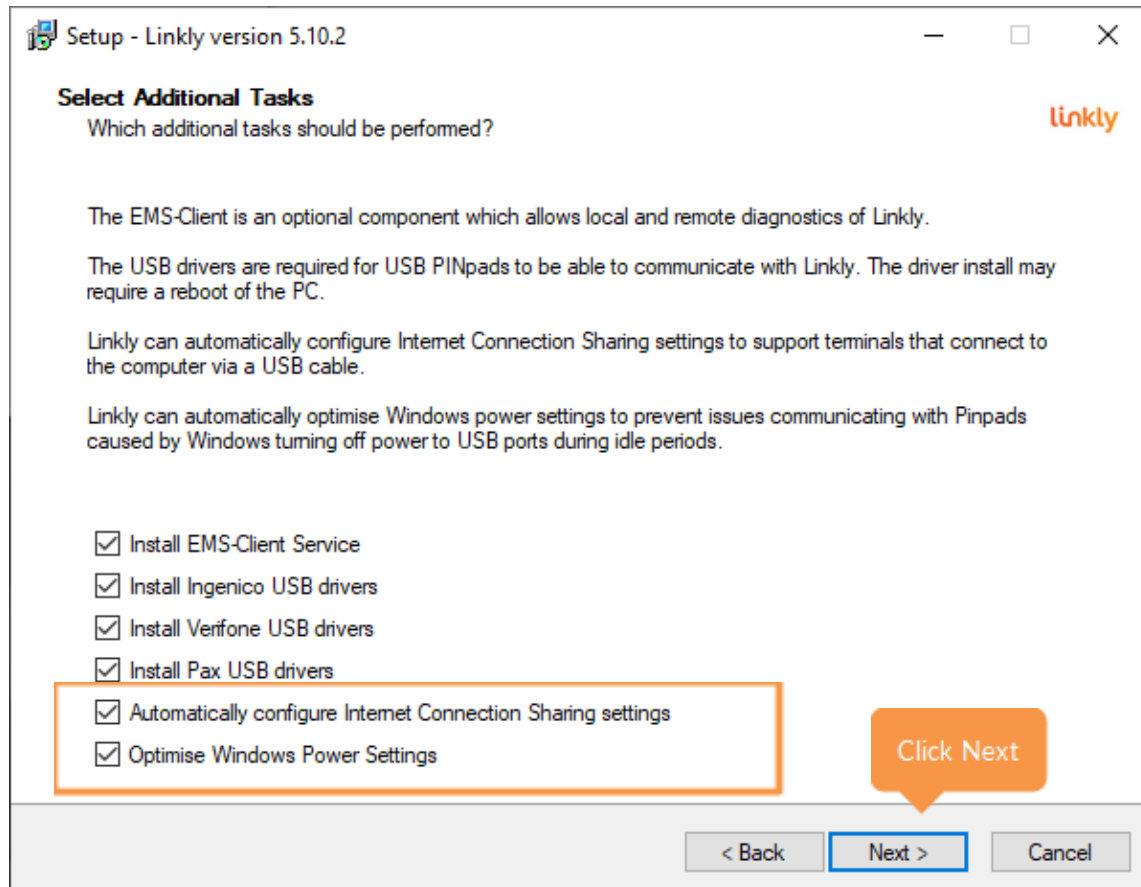


For a Production Installation: select “Linkly Client and Server (A PINpad will be attached to this PS)”



For testing with a Test POS software: install the Linkly Test POS software, which is used to simulate transaction processing with an Orbit Terminal. You only need to install this software if you do not have a production POS system, or if you're simply looking to test transactions on an Orbit Terminal. Its primary purpose is to facilitate testing with either Linkly OnPrem or Linkly Cloud.



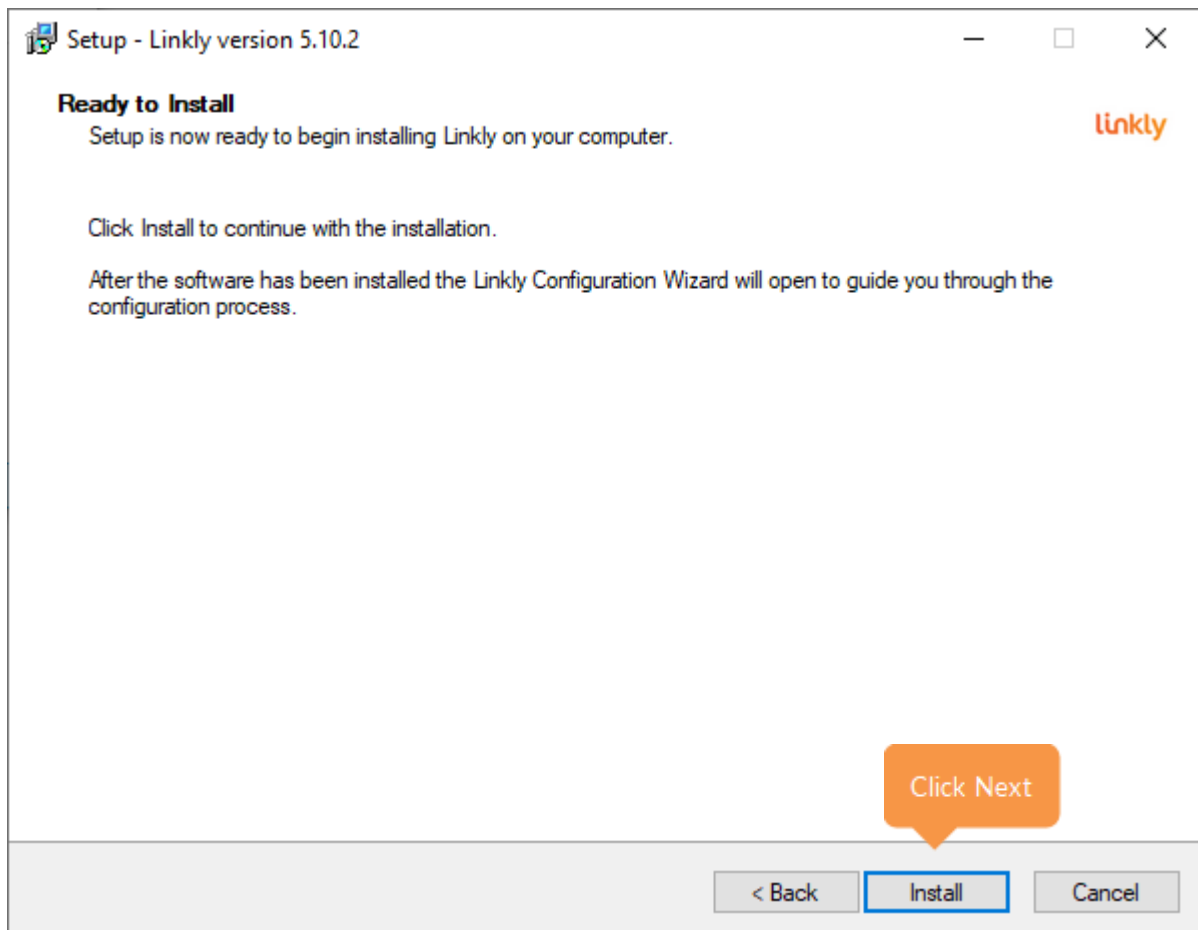


Automatically configure Internet Connection Sharing Settings

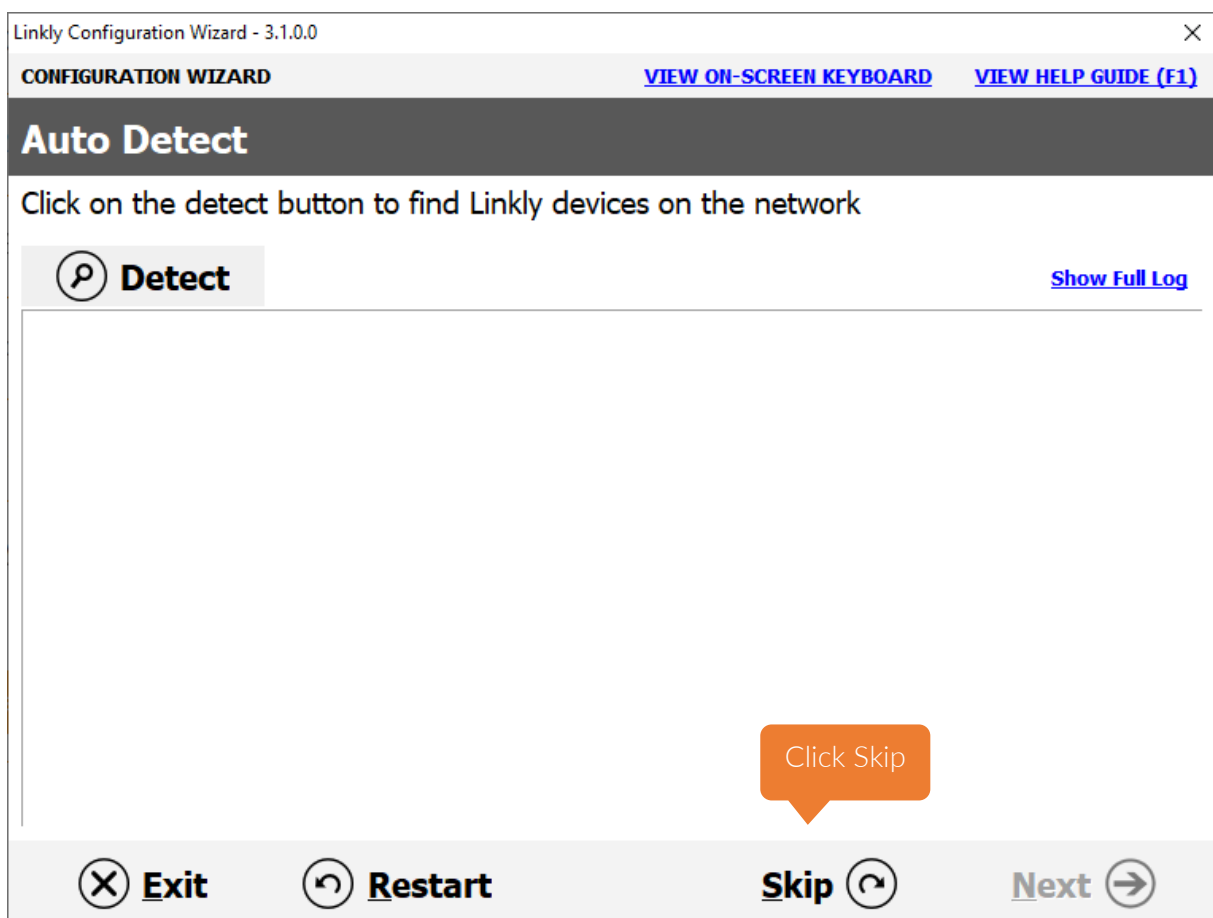
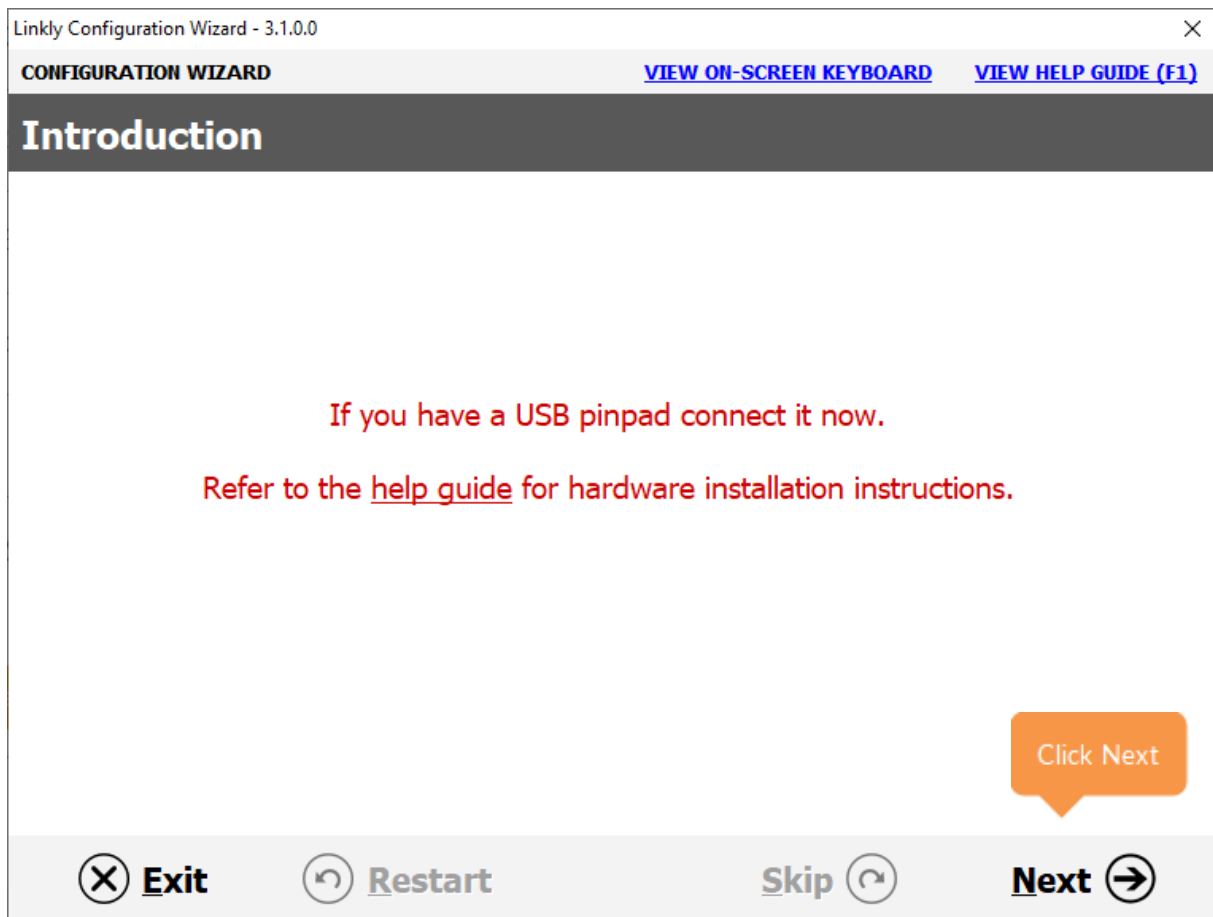
Automatically configures Internet Connection Sharing Settings for Eftpos Terminals utilizing ICS

Optimise Windows Power Settings

Optimises Windows Power settings that are known to interfere with a devices USB connection.



2.2 Software installation - Configuration Wizard



Linkly Configuration Wizard - 3.1.0.0

CONFIGURATION WIZARD
[VIEW ON-SCREEN KEYBOARD](#)
[VIEW HELP GUIDE \(F1\)](#)

Select Your Bank

Select your bank from the list below

Linkly - Default
ANZ
Bankwest
Bendigo
CBA
First Data Merchant Solutions
NAB
St George
Suncorp
Touch
Westpac
WPAV

Click Next

Exit Restart Skip Next

Linkly Configuration Wizard - 3.1.0.0

CONFIGURATION WIZARD
[VIEW ON-SCREEN KEYBOARD](#)
[VIEW HELP GUIDE \(F1\)](#)

Setting Up EFT-Client

Edit EFT-Client settings and click on next to continue

Pinpad port: TCPIP

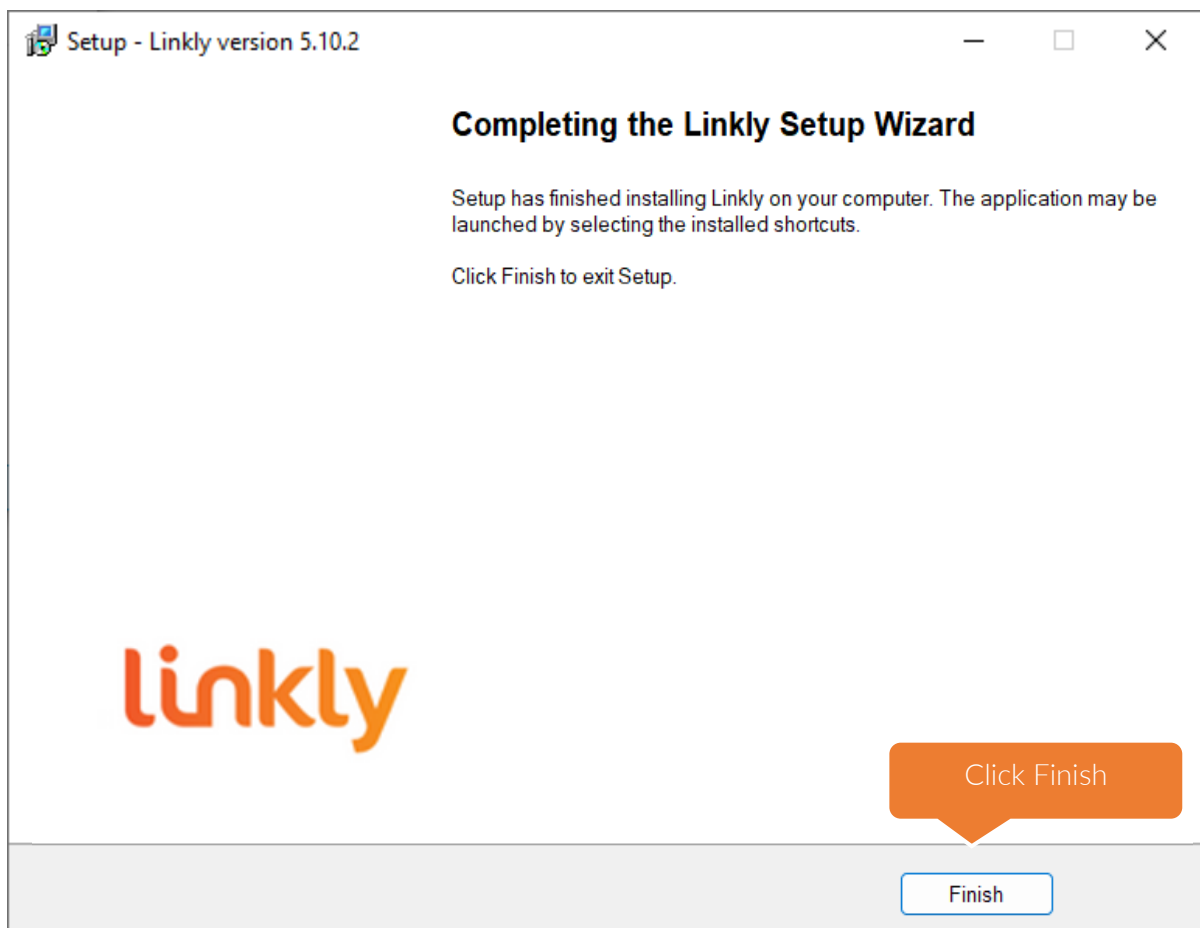
Pinpad modem/printer configuration

- ☐ I want the to use the pinpad's internal modem/GPRS as my fallback link to the bank.
- ☐ I want to use the pinpad's internal printer as my EFTPOS printer.
- ☒ I want to use the pinpad's internal modem/GPRS as my primary link to the bank.

☐ View advanced settings...

Click Next

Exit Restart Skip Next



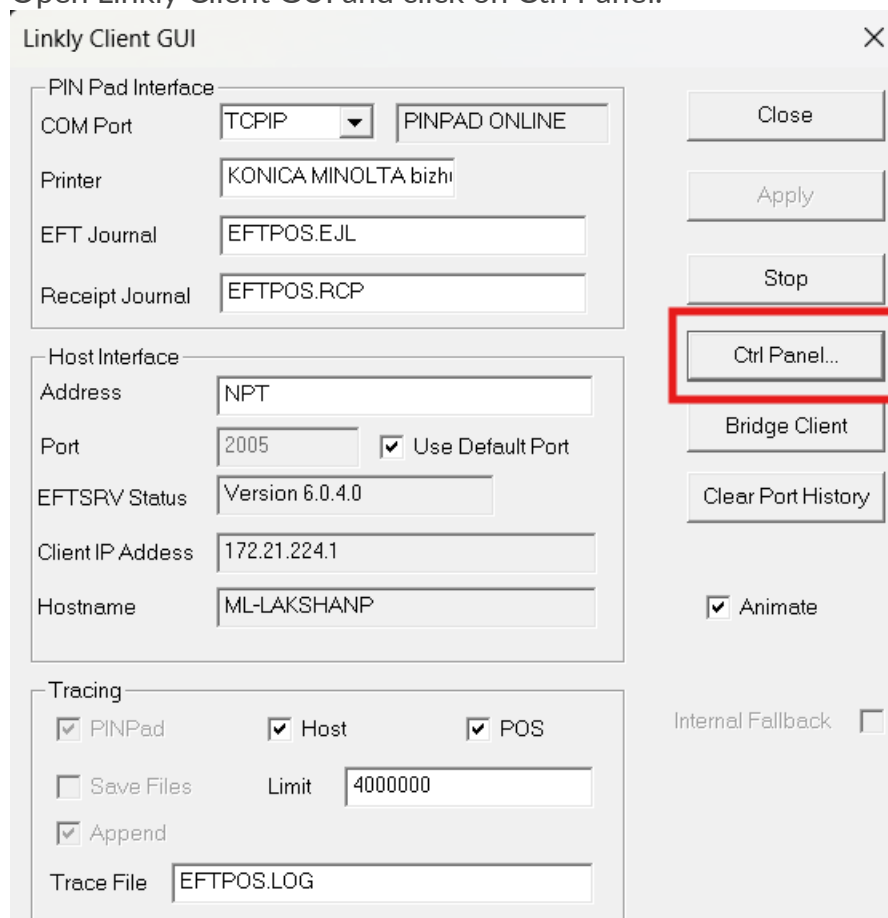
The installation is now complete.

2.3 OnPrem Terminal Setup

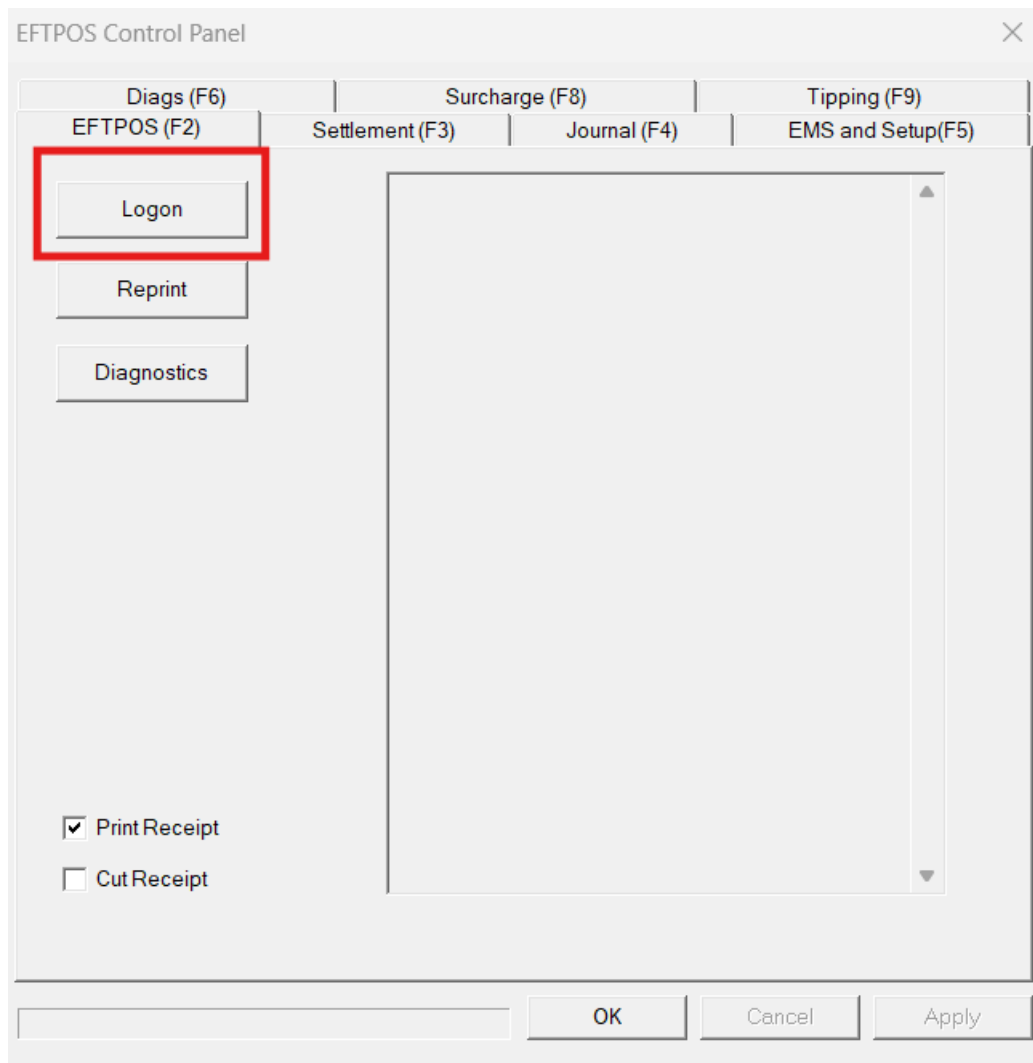
Please refer to Section 5.1 (On-Premises (TCP/IP) mode) of the “Linkly Orbit Terminal Setup and Operational Guide v1.0”.

2.4 OnPrem Connection test

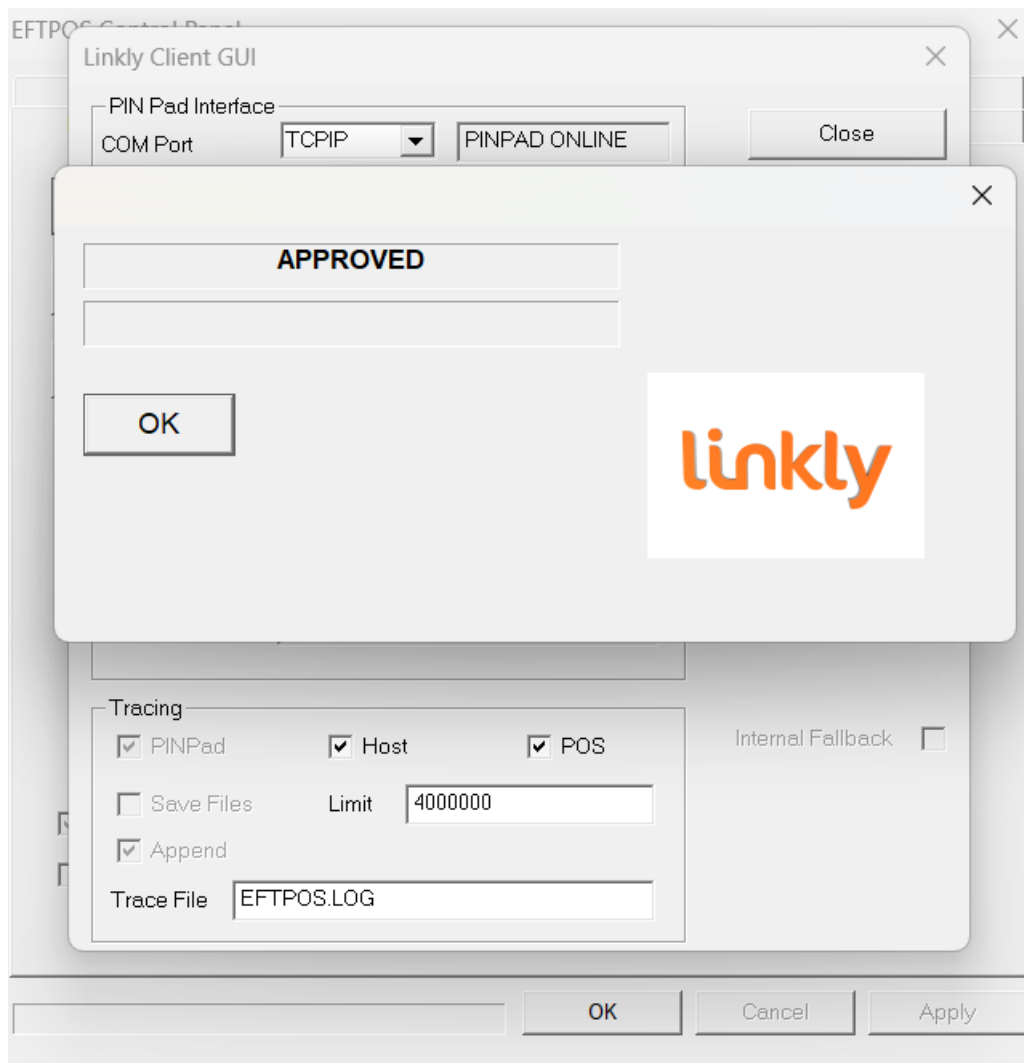
1. Check that the terminal is successfully connected by performing a successful logon using the Linkly Client Software.
2. Open Linkly Client GUI and click on Ctrl Panel:



2. This will take you to the EFTPOS tab in the control panel. Click on Logon:



3. This should trigger a Logon prompt on the terminal and display a success message on the POS, as shown below:



4. Finally, test a transaction from the POS to ensure the POS can communicate with the Linkly Client software.

This completes the set up procedure.

3. Linkly Cloud

3.1 Cloud POS Setup

To enable transaction processing between your POS software and the terminal, the two systems must be paired. This requires the following credentials:

- Cloud ID
- Password
- Paircode (generated directly from the terminal)

Once you have obtained these credentials, enter them into the pairing section of your POS software. If you're unsure how to do this or need assistance, please contact your POS provider for support.

If you do not yet have a Cloud ID and Password, these can be requested from your terminal provider or acquirer.

.

3.2 Cloud Terminal Setup

Please refer to Section 5.2 (Linkly Cloud mode) of the “Linkly Orbit Terminal Setup and Operational Guide v1.0”.

3.3 Cloud Connection test

Check that the terminal is successfully paired by performing a logon request/transaction from the POS. If you are unable to perform transactions, please contact your POS provider for support.

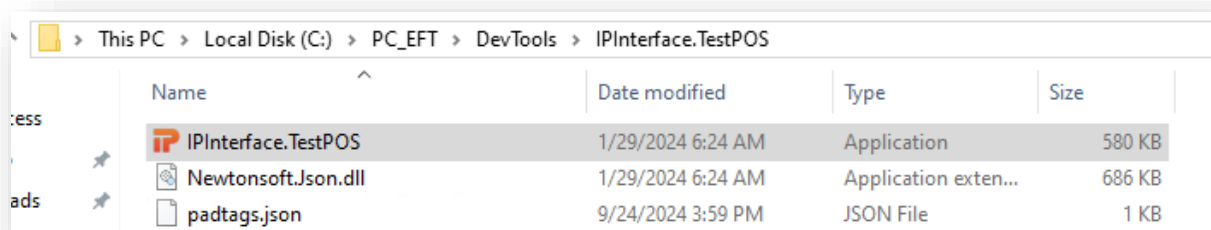
This completes the set up procedure.

4. Test POS software

If you have installed the Linkly Software for Offline Development (Refer to section 2.1), you will have access to the IP Test POS software.

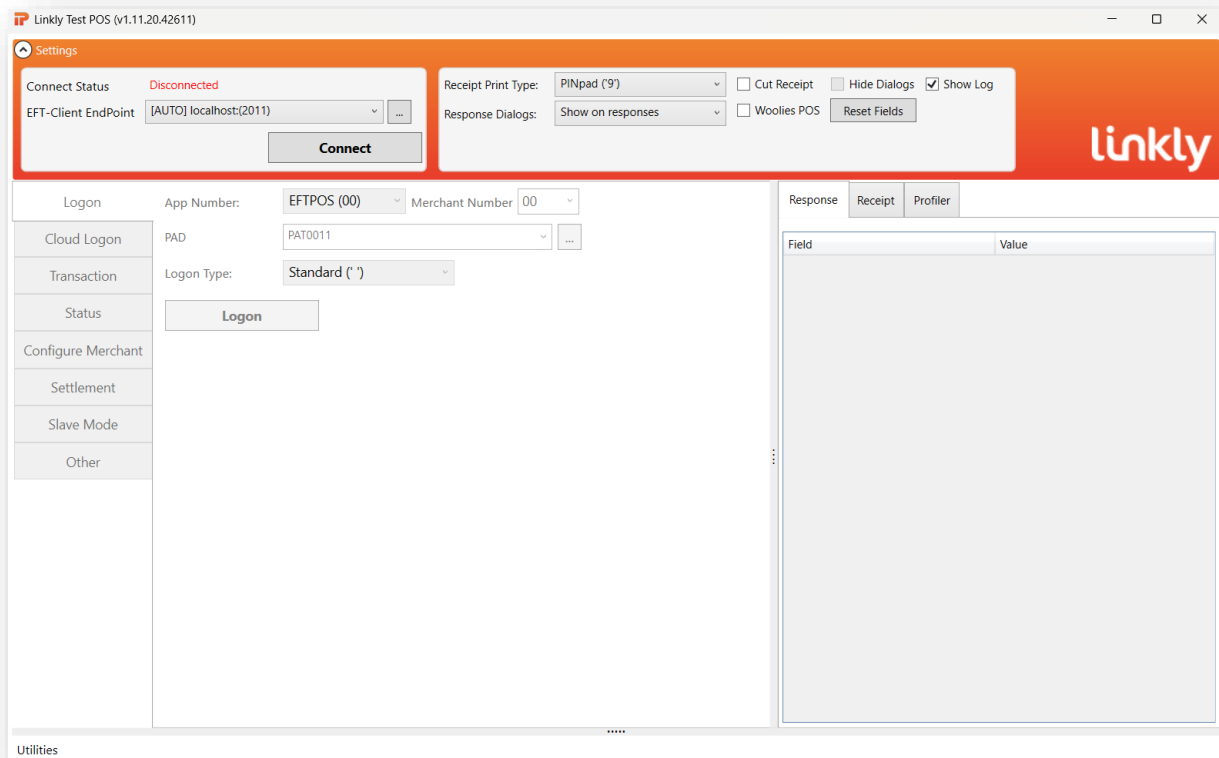
4.1 IPTestPOS

1) Open the executable in “C:\PC_EFT\DevTools\IPInterface.TestPOS”

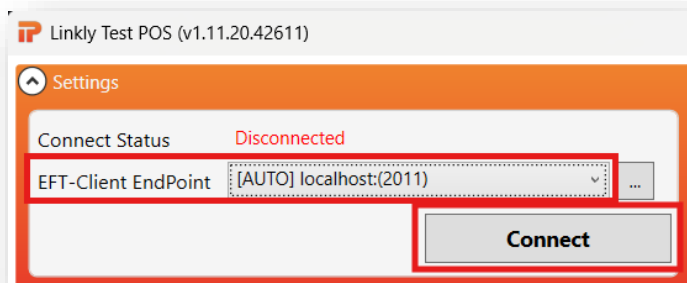


This will open the IPTest POS:

Linkly Orbit POS Setup and Operational Guide

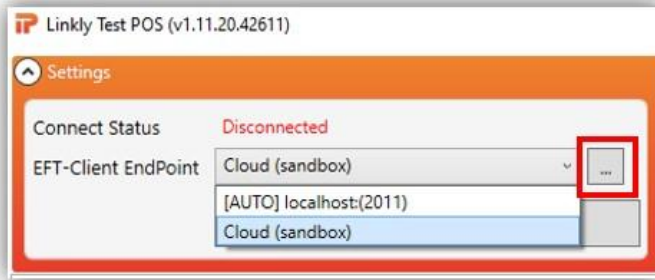


2) For OnPrem, select [AUTO] Localhost:2011) and click Connect:



Skip to step (8) once completed.

3) For Cloud, select Cloud (Sandbox) from the drop down and then click on the 3 dots as shown below -



4) Clicking on the 3 dots will open the Cloud Sandbox configurator.
Enter the Username, Password and Pairing code (generated on the terminal) and click on “Pair PINpad”.

Note: If you do not have Cloud Sandbox Credentials for your testing, please request through support@linkly.com.au.

EFT-Client EndPoints

Cloud (sandbox)

Name: Cloud (sandbox)

Type: Cloud

Address: pos.sandbox.cloud.pceftpos.com

Port: 443

Client Id: [Redacted]

Password: [Redacted]

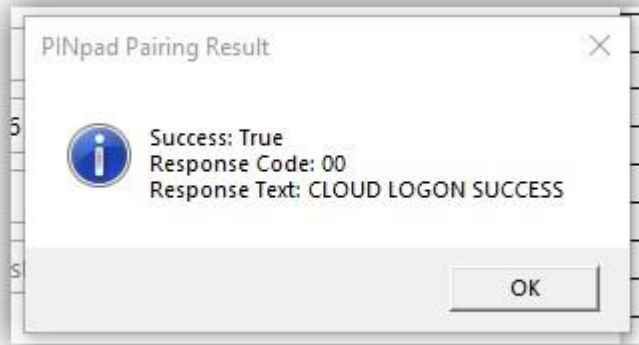
Pairing Code: 701293

Token: eyJhbGciOiJIUzI1NiIsInR5cCI6IkpXVCJ9.eyJjbGllbnRpZCI6ImZU4MD.

Pair PINpad Unpair

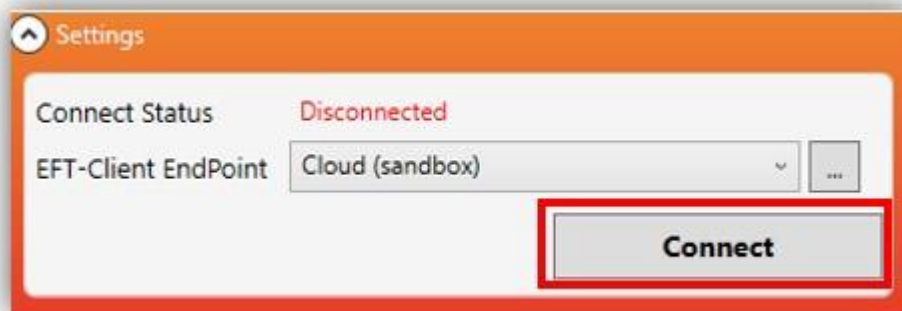
Add Delete ↑ ↓ Apply Cancel OK

5) If the pairing is successful, you will see the following message. Click OK.



6) On the Cloud Sandbox configurator, click "Apply" and then "OK" to close the configurator.

7) Click "Connect" to begin using IPTestPOS for transaction testing.



8) Click 'Transaction' in the Test Pos application's navigation pane and then click Transaction at the bottom. This will send the transaction to your terminal.

Note: Please use the options available to configure the Transaction request in IPTestPOS.

Linkly Orbit POS Setup and Operational Guide

Linkly Test POS (v1.11.20.42611)

Settings

Logon

Cloud Logon

Transaction

Status

Configure Merchant

Settlement

Slave Mode

Other

Eftpos Preset **One Button Preset**

App Number: EFTPOS (00) Merchant Number 00

Txn Ref 2501101210570322 ☒ Auto Txn Ref

Txn Type PurchaseCash (P)

Amt Purchase 10.00 Amt Cash 0

AuthNo RRN

PAN Source Default (' ')

Currency Code AUD

Original Txn Type

☐ Training Mode ☐ Enable Tip ☐ Print Timeout

☒ PrePrint Timeout

PAD

PAD Content PAT0011

☐ Append Last RFN ☐ Append SKU ☐ Append OPR ☐ Append AMT

☐ Append UID ☐ Append NME ☐ Append VER ☐ Append VND

☒ Append PCM ☒ (PCM Barcode)

Query + Transaction

Query Type Read Card ('0')

Transaction Query + Transaction

Response Receipt Profiler

Field	Value
-------	-------

Utilities

This completes the testing section using IP Test POS.



anzworldline.com.au

ANZ Worldline Payment Solutions means Worldline Australia Pty Ltd ACN 645 073 034 ("Worldline"), a provider of merchant solutions. Worldline is not an authorised deposit taking institution (ADI) and entry into any agreement with Worldline is neither a deposit nor liability of Australia and New Zealand Banking Group Limited ACN 005 357 522 ("ANZ") or any of its related bodies corporate (together "ANZ Group"). Neither ANZ nor any other member of the ANZ Group stands behind or guarantees Worldline.